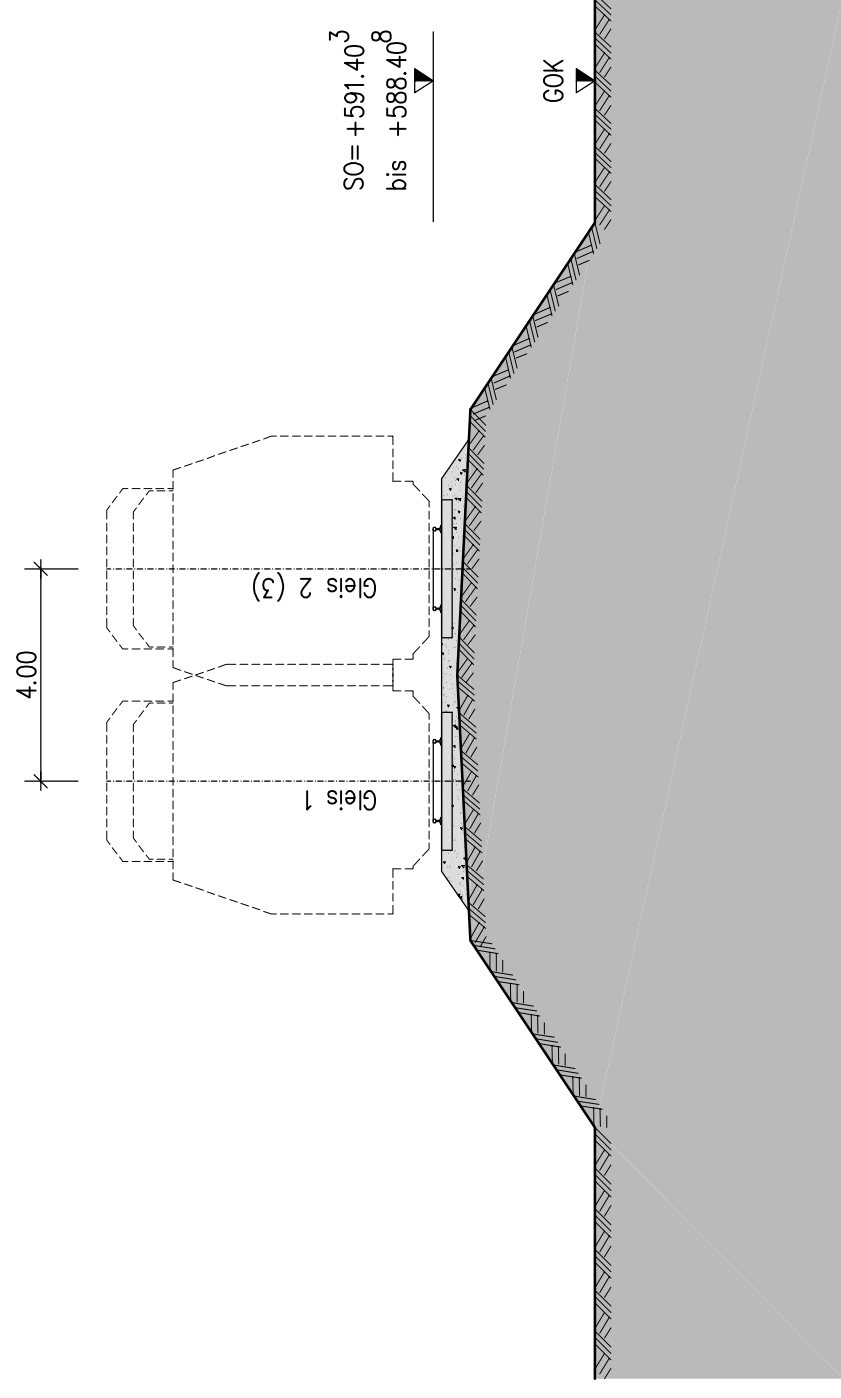
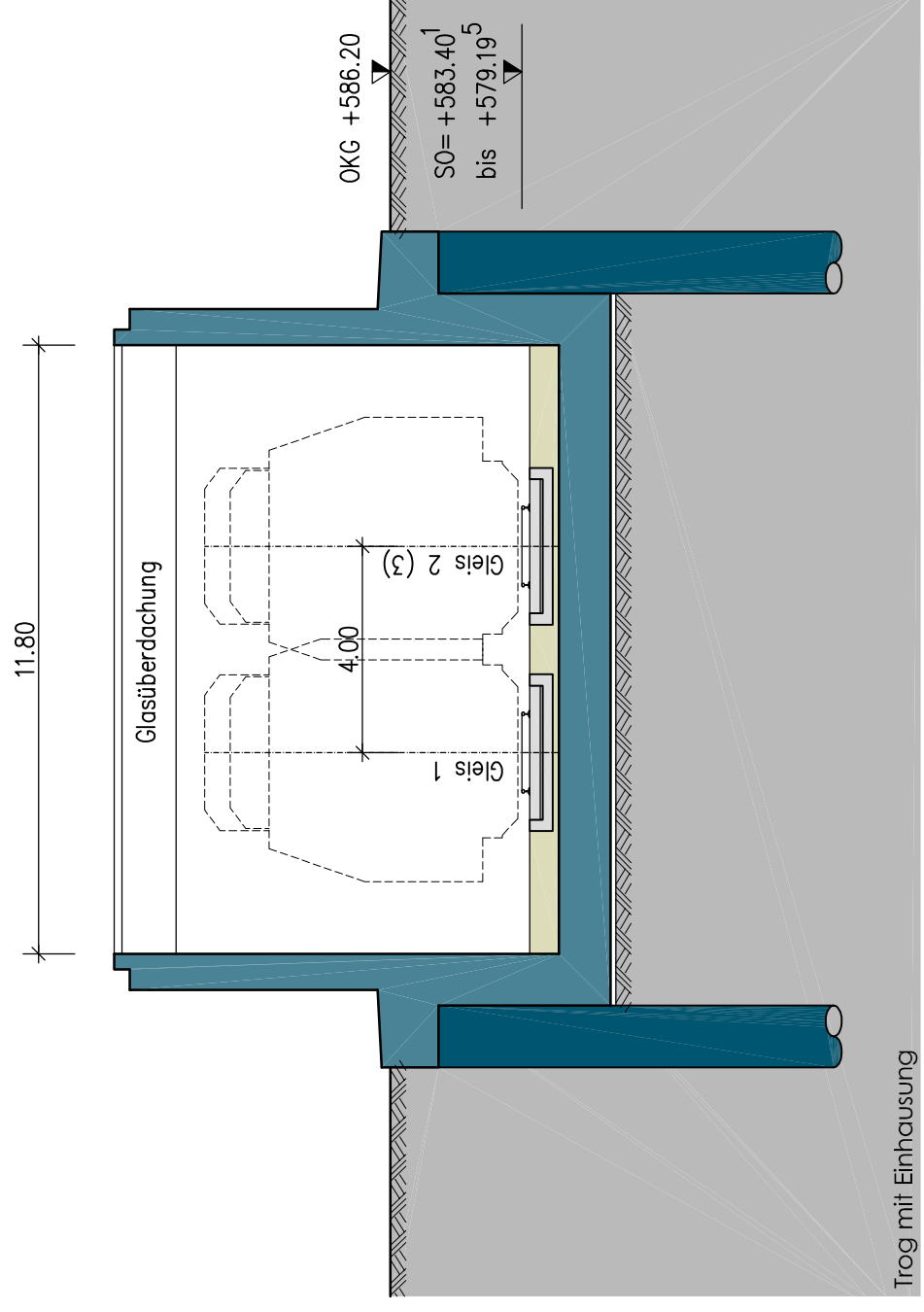
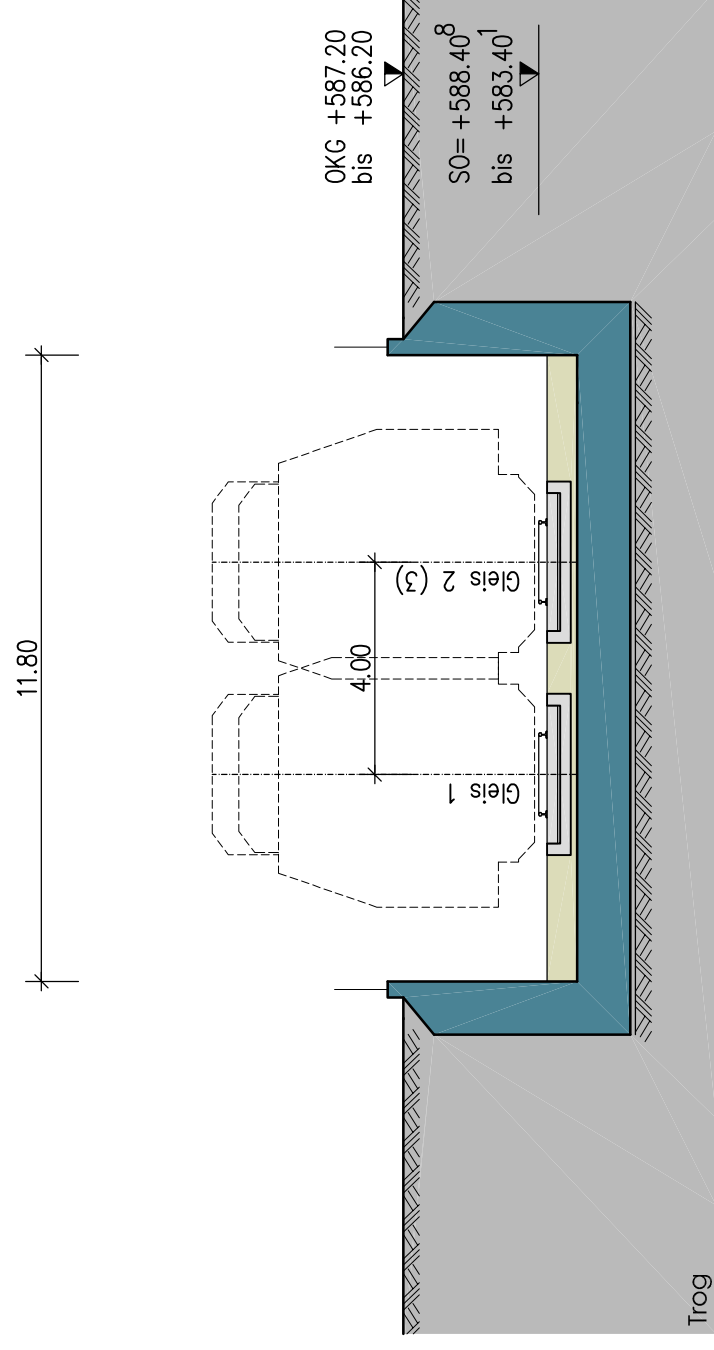


Übersichtsplan

M 1:5000

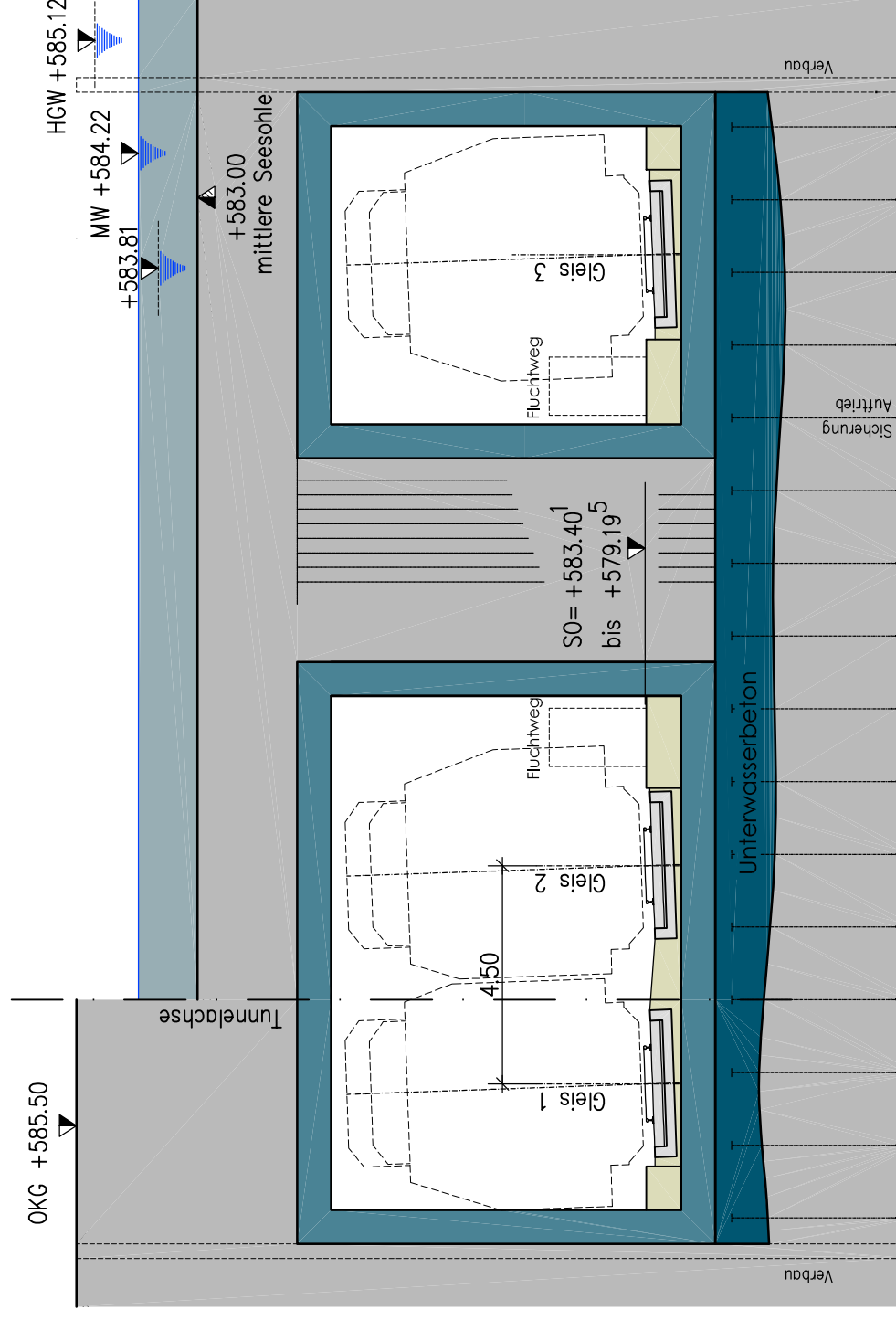


Schnitt M 1:100
Station 0,00 bis 0,242



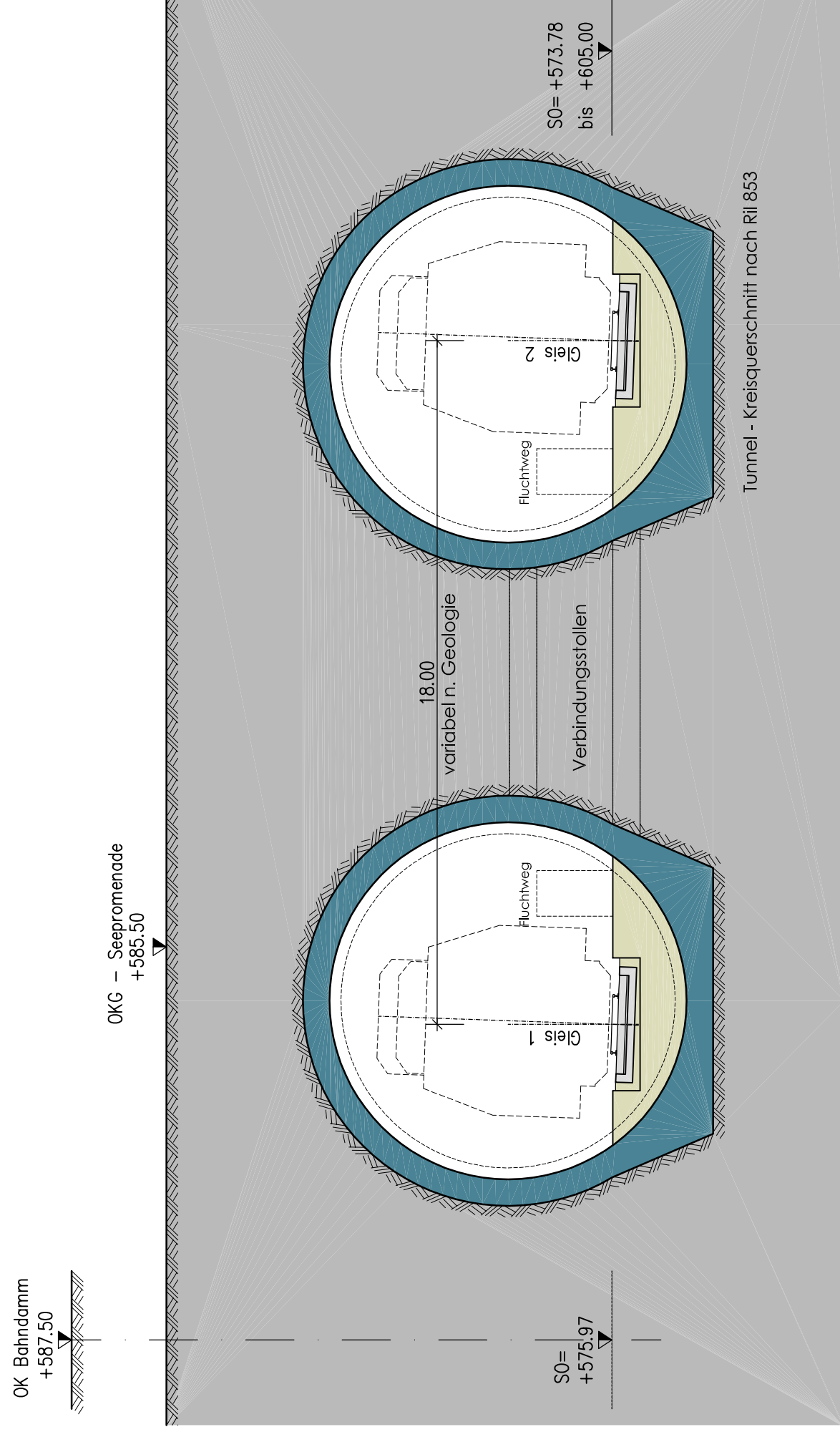
Schnitt M 1:100

Station 0,242 bis 0,65 - offene Bauweise

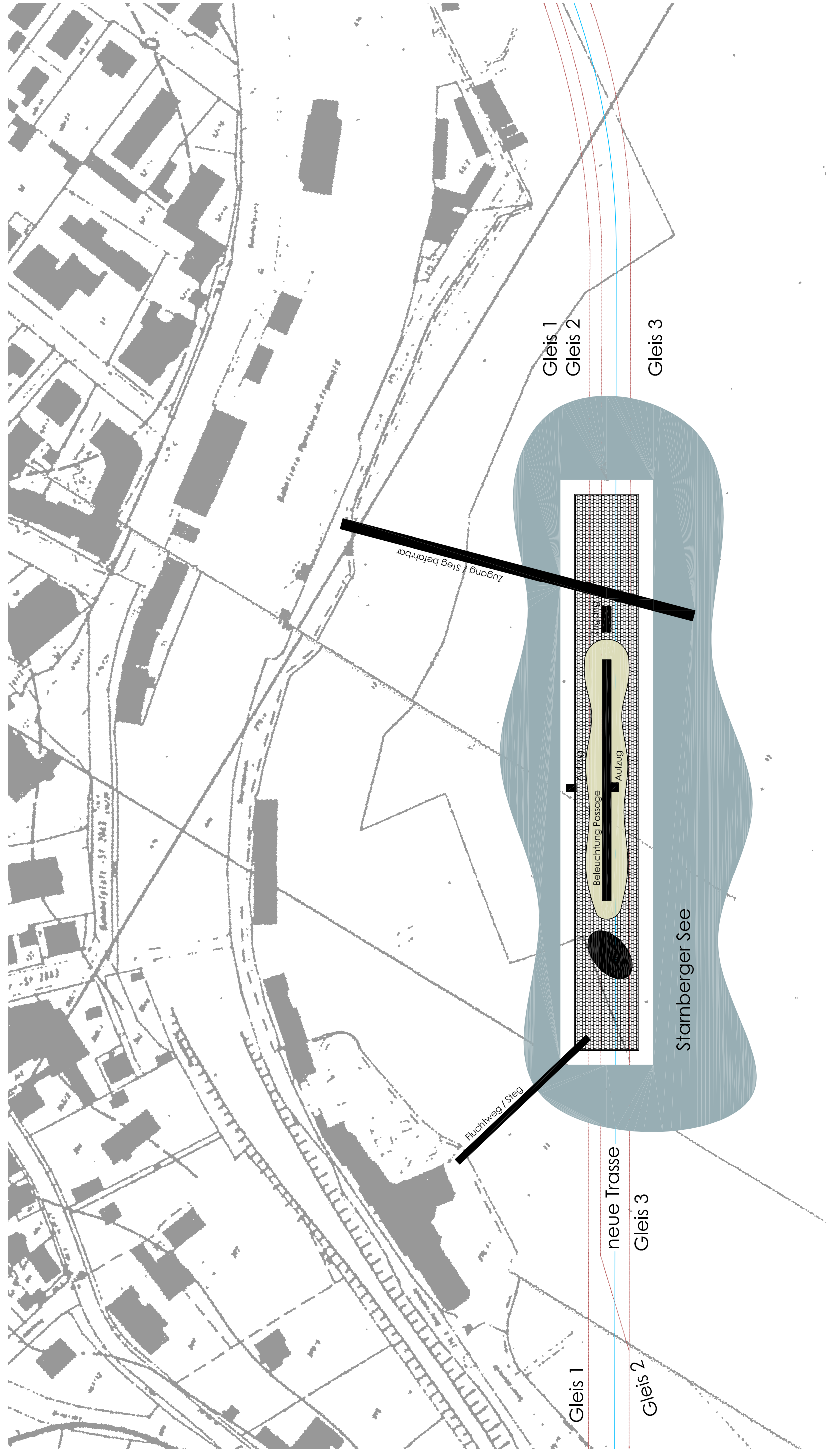


Schnitt M 1:100

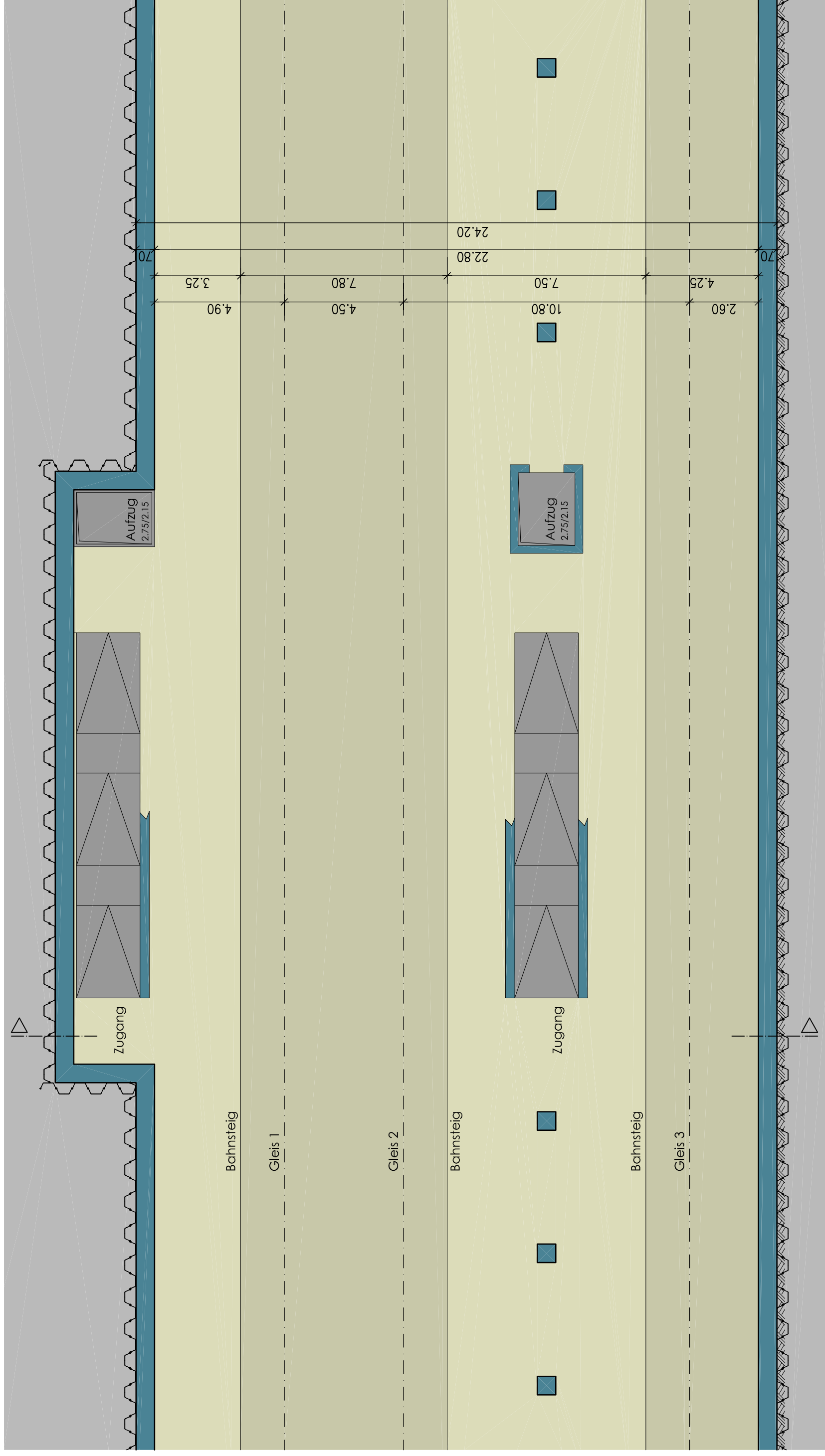
Station 0,65 bis 1,30 - Tunnel - offene Bauweise



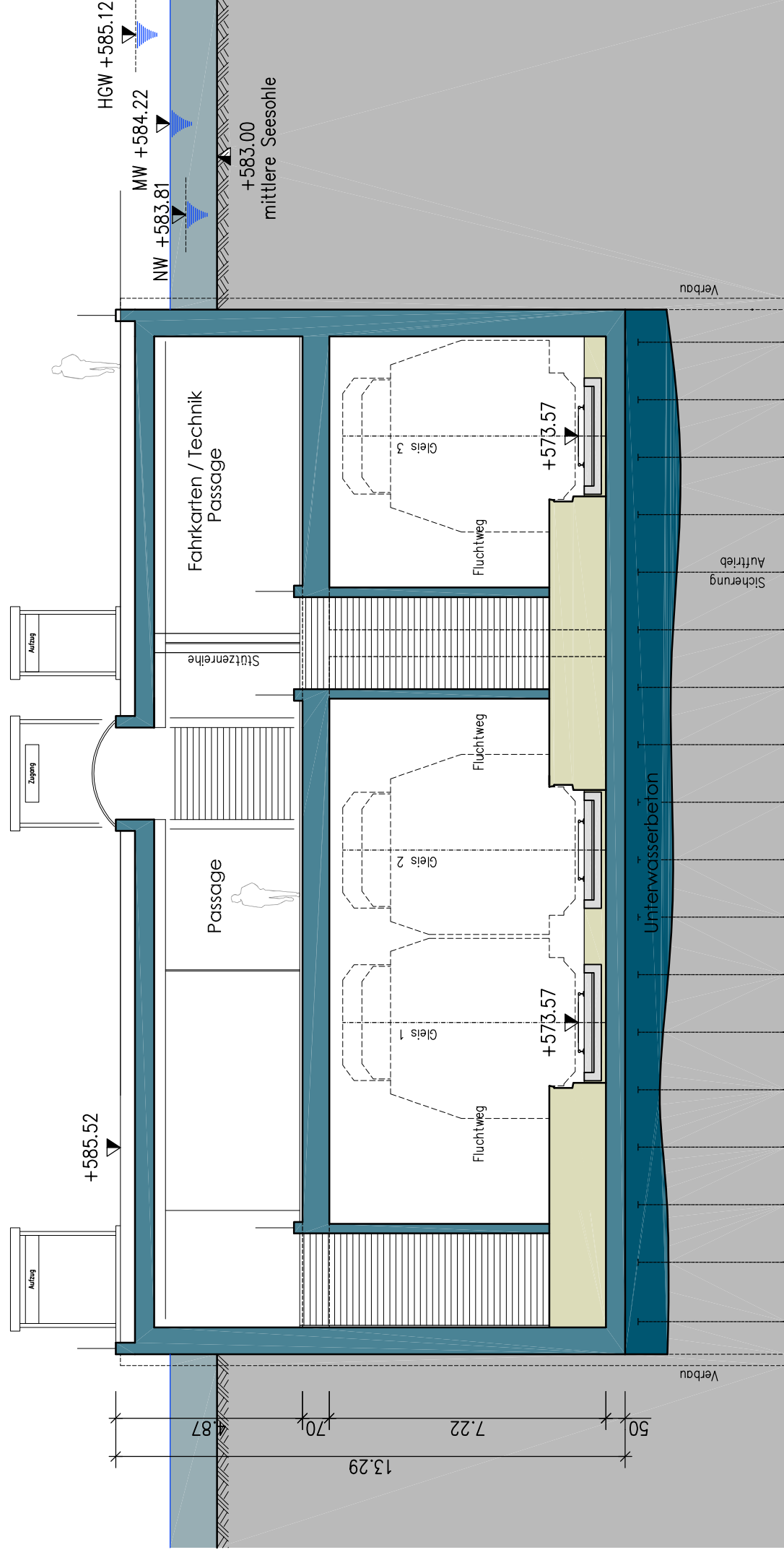
Schnitt M 1:100
 Station 1,30 bis 3,00 - Tunnel - bergm. Bauweise



Draufsicht M 1:1000
Bahnhof See - Variante



Teilgrundriss M 1:100
Zugang Bahnsteigebene



Schnitt M 1:100
Zugang Bahnsteigebene